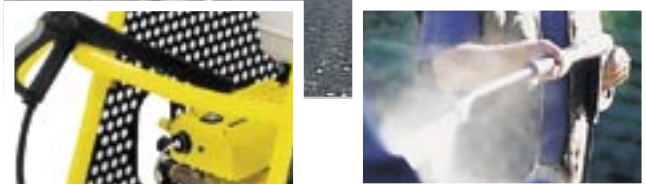
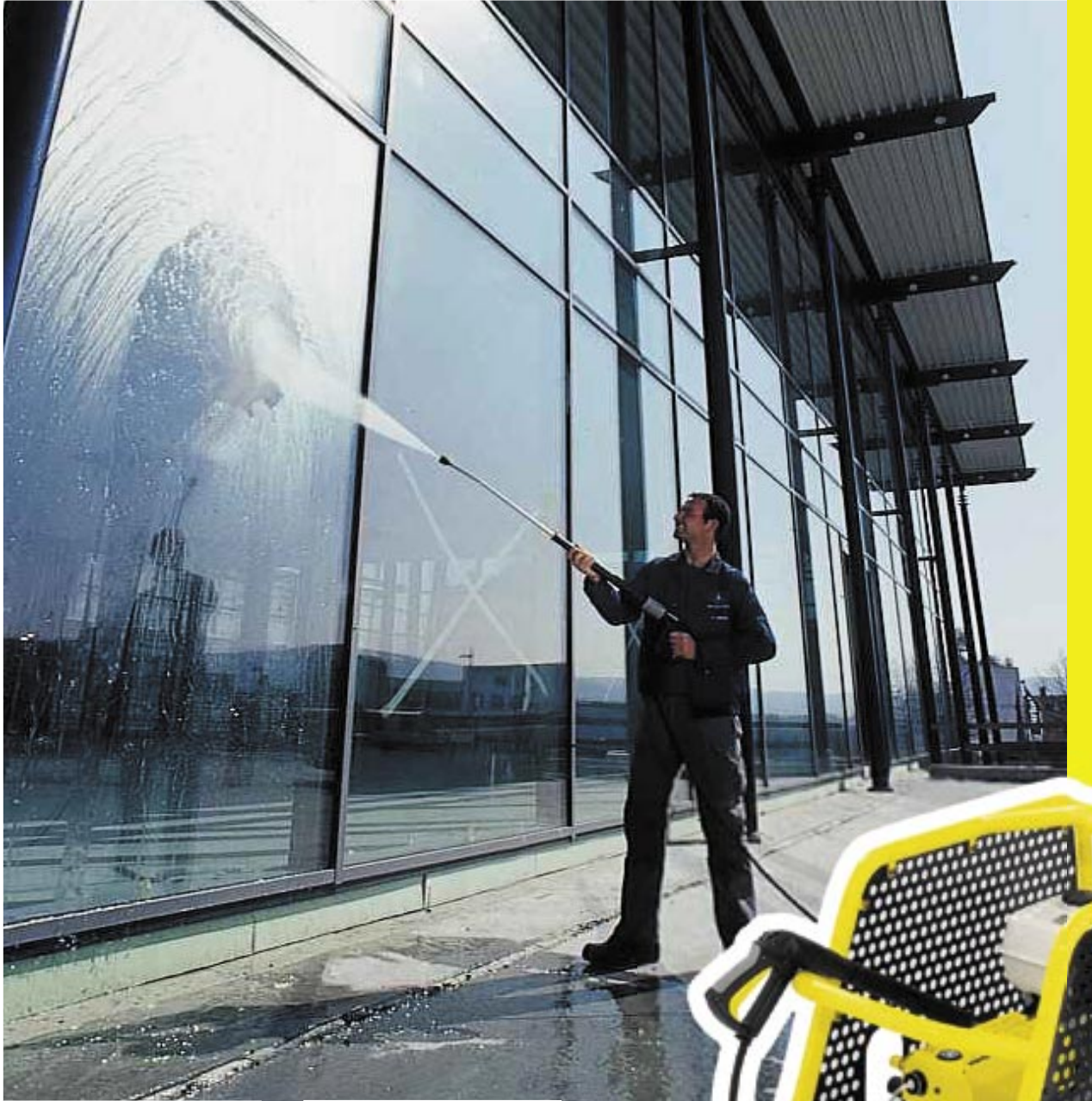


Cold water pressure washer - HD 1050 Cage

Exceptional performance - anywhere



Petrol and diesel versions.

High-pressure cleaners that provide the power professionals need. Available with either a 13.0 HP four-stroke petrol engine or an electrically started diesel engine, the HD 1050 Cage gives you outstanding performance independently of an electric supply.

Mounted on a sturdy tubular steel frame with caged sides, giving maximum protection to all components. The frames design also allows for mechanical handling by crane.

Supplied with a servo-press trigger gun, ensuring operator comfort and control over water pressure and flow rates, all on the trigger gun.



Simply clean

Cold water pressure washer - HD 1050 Cage

Technical Specification

| | HD 1050 B Cage | HD 1050 DE Cage |
|------------------------------|---------------------------|----------------------------|
| Motor type | Honda Petrol | Yanmar Diesel |
| Pump pressure (mbar) | 40-230 | 40-230 |
| Water flow rate (l/h) | 400-930 | 400-930 |
| Hose length (m) | 15.0 | 15.0 |
| Weight (kg) | 77.0 | 122.0 |



Petrol and diesel versions.

Sturdy tubular frame:

The cage version features a powder coated, corrosion-resistant tubular steel frame with rubber tyred wheels, for easy manoeuvrability and transportation.

The engine shuts down automatically if oil level is too low and engine speed is reduced during work breaks to keep noise levels and fuel consumption low.

This machine is supplied with Kärchers 'touchless changeover' triple nozzle, giving you three different washing options, at the turn of the spray lance.



KÄRCHER

Simply clean