

GroundTrak[®]



GroundTrak is the ultimate solution for robust and reliable temporary ground protection, providing a stable and safe surface for heavy foot traffic, equipment, and light vehicles, supporting loads up to 20 tonnes. Its unique compact design allows for easy portability, setup, and relocation, making it versatile for various applications. GroundTrak features amazing non-slip properties due to its raised square top pattern, and is durable and weather-resistant to ensure long-lasting use.

Features

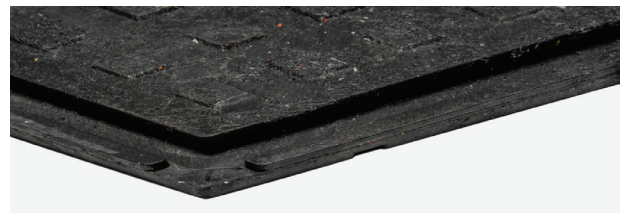
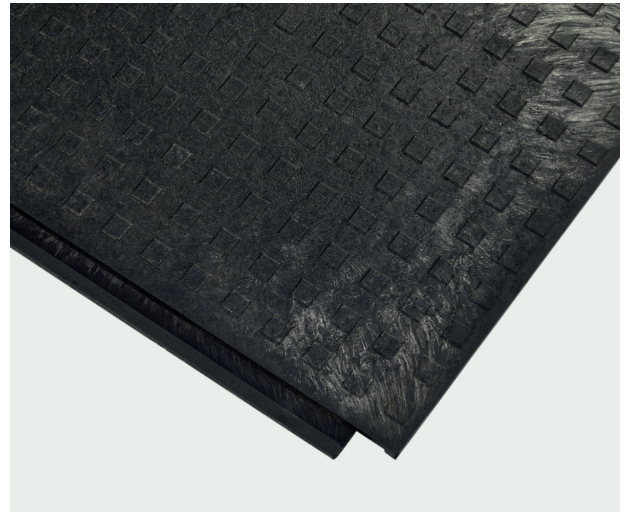
- ◆ **Typical applications:** Perfect for construction sites, outdoor markets and trade shows, temporary parking solutions, outdoor recreation and sports events, emergency access routes, outdoor weddings and special events, camping and outdoor stages.
- ◆ **Material:** 100% recycled PVC.
- ◆ **Cleaning:** Using a stiff brush will usually remove most dirt and debris. For more stubborn dirt, a pressure washer can be used.
- ◆ **Warranty:** Lifetime.

Suitable for
indoor and outdoor use



For more information about this product or, to place an order [click here](#)

Please note, the ground beneath the matting must be structurally sound and free from significant depressions, such as potholes, as these can cause the matting to crack or become damaged



| Code | Metric | Imperial | Thickness | Weight | Colour |
|----------|----------------|-----------|-----------|--------|--------|
| GP3248BL | 800mm x 1200mm | 31" x 47" | 22mm | 22kgs | Black |

Please note, all Imperial sizes have either been rounded up or down to the nearest whole number

GroundTrak®



Technical Specification

| | |
|---------------------|---|
| Slip resistant: | Excellent slip resistance to level 3 |
| Wear resistant: | Excellent wear resistance to level 3, suitable for heavy footfall |
| Chemical resistant: | Yes, resistant to most chemicals, grease, and oils |
| Connectable: | Mats are connectable to create any shape or size |
| Dry area: | Yes |
| Wet area: | Yes |
| Heavy area: | Yes |
| Wheeled area: | Yes |
| Environment: | Suitable for indoor and outdoor use |
| Impact resistant: | Yes |

| | |
|------------------|--|
| Product testing: | ◆ Anti-slip rating: R10 (EU standard: DIN 51130:2010) |
| | ◆ Fire testing: B rating of classification of reaction to fire performance (Testing method in accordance to EN 13501-1:2018) |
| | ◆ Water absorption: 0.51% (PN-EN ISO 62:2008) |
| | ◆ Modulus of tensile stiffness: 100MPa |
| | ◆ Tensile strength: 2.9MPa |
| | ◆ Deformation at break point: 10.3% |
| | ◆ Charpy impact strength: 6.89kJ/m ² (PN-EN ISO 179-1:2010) |
| | ◆ Ball indentation hardness: 48.4MPa (PN-EN ISO 2039-1:2004) |
| | ◆ Hardness shore A: 86.3°Sh (PN-EN ISO 868:2005) |
| | ◆ Ball press hardness: 48.4MPa (PN-EN ISO 2039-1:2004) |
| | ◆ Electrical properties |
| | ◆ Insulation resistance: 2.55*10 ¹³ Ω/cm (PN-EN 62631-3-1:2016:10 IEC 60093:1980) |
| | ◆ Surface resistance: 7.14*10 ¹³ Ω/cm (PN-EN 62631-3-2:2016:04 IEC 60093:1980) |
| | ◆ Dielectric strength: 8.11kV/mm (PN-EN 60243-1:2013-12) |

| | |
|-----------------|--------------------------------------|
| Sustainability: | Manufactured from 100% recycled PVC. |
|-----------------|--------------------------------------|