

GroundTrak® PRO

GroundTrak PRO is the heavy-duty version of our trusted GroundTrak mat, designed to deliver exceptional temporary ground protection in the most demanding environments.

Manufactured from 100% recyclable High-Density Polyethylene (HDPE), each mat measures 1200mm x 2400mm x 12.7mm thick, supporting loads of up to 60 tonnes, depending on the ground conditions. GroundTrak PRO is engineered for strength and ease of use, featuring a dual-sided design: one side with a 4-bar chequer plate surface for pedestrian use, and the other with a 1-bar chequer plate for vehicle use - making it ideal for a wide range of applications.

GroundTrak PRO is lightweight and features integrated handles for quick, seamless lifting and positioning, while providing a safe, stable, and secure surface for heavy machinery, large vehicles, and high-impact areas. In addition to hand holes for easy lifting, each mat also features corner and side holes, designed for use with our two-way or four-way connectors. These securely attach the mats together, allowing you to create custom-sized spaces, roadways, or larger flooring areas.

Its non-slip surface pattern ensures maximum grip and durability, even in the most challenging conditions. Waterproof and resistant to oils and chemicals, GroundTrak PRO is also completely maintenance-free, delivering long-lasting, reliable performance time and time again.

Features

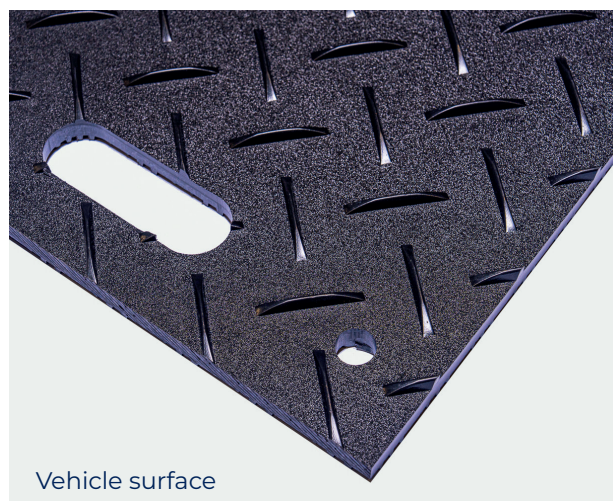
- ◆ **Typical applications:** Perfect for a wide range of applications, including groundwork cover, construction sites, industrial flooring, utilities and infrastructure maintenance, temporary roadways and parking solutions, pedestrian walkways, festival and outdoor event flooring (including markets, trade shows, outdoor recreation, sports events, outdoor weddings, special events, camping and outdoor stages), lawn and landscape protection, kerb, tarmac and block paving protection, heritage sites and eco-sensitive areas, sports field and golf course maintenance, emergency response and disaster recovery, and military and defence operations.
- ◆ **Material:** 100% recyclable High-Density Polyethylene (HDPE).
- ◆ **Cleaning:** Using a stiff brush will usually remove most dirt and debris. For more stubborn dirt, a pressure washer can be used.

Suitable for
indoor and outdoor use



For more information about this product or, to place an order [click here](#)

Please note, the ground beneath the matting must be structurally sound and free from significant depressions, such as potholes, as these can cause the matting to crack or become damaged.



GroundTrak® PRO

Code	Metric	Imperial	Thickness	Weight	Colour
GP4896BL	1200mm x 2400mm	47" x 94"	12.7mm	37.5kgs	Black
GPC-2 - 2-way Galvanised Connector	191mm x 15mm	8" x 1"	4.5mm	0.1kgs	Silver
GPC-4 - 4-way Galvanised Connector	191mm x 140mm	8" x 6"	4.5mm	0.2kgs	Silver
GPPC-2 - 2-way Standard Connector	80mm x 60mm	3" x 2"	35mm	0.1kgs	Black
GPPC-4 - 4-way Standard Connector	95mm x 95mm	4"x 4"	35mm	0.2kgs	Black

Please note, all Imperial sizes have either been rounded up or down to the nearest whole number

Technical Specification

Slip resistant:	Excellent slip resistance to level 3
Wear resistant:	Excellent wear resistance to level 3, suitable for heavy footfall
Chemical resistant:	Yes, resistant to most chemicals, grease, and oils
Connectable:	Mats are connectable to create any shape or size
Disability friendly:	The pedestrian surface (4-bar chequer plate) is suitable for wheelchair users
Dry area:	Yes
Wet area:	Yes
Heavy area:	Yes
Wheeled area:	Yes
Environment:	Suitable for indoor and outdoor use
Impact resistant:	Yes

GroundTrak[®] PRO

Technical Specification

Product testing:	◆ Physical properties
	◆ Density: 0.96 g/cm ³ (ASTM D792)
	◆ Water absorption: <0.10% (ASTM D570)
	◆ Mechanical properties
	◆ Hardness: 65 Shore D (ASTM D2240)
	◆ Tensile strength at yield 23°C: 4000 psi (ASTM D638)
	◆ Tensile modulus: 217000 psi (ASTM D638)
	◆ Elongation at break: >700 % (ASTM D638)
	◆ Flexural strength: 210000 psi (ASTM D790)
	◆ Compressive strength: 1500 psi (ASTM D695)
	◆ Coefficient of friction, dynamic: 0.20-0.29
	◆ Izod impact, notched: 3.5 ft-lb/in (ASTM D256)
	◆ Electrical properties
	◆ Surface resistivity: >10 ¹⁴ Ω/cm (ASTM D257)
	◆ Dielectric constant: 2.4 1MHz (ASTM D150)

Sustainability:	Manufactured from 100% recyclable HDPE, which is widely accepted at recycling centres
-----------------	---

Temperature resistance:	◆ Service temperature: -73°C to 82°C
	◆ Melting point: 131°C (ASTM D3418)
	◆ Vicat softening point: 125°C (ASTM D1525)
	◆ Heat deflection temperature: 77°C (ASTM D648)
	◆ Brittleness Temperature: -75°C (ASTM D746)
	◆ Fire: UL94 HB

Cleaning:	Using a stiff brush will usually remove most dirt and debris. For more stubborn dirt, a pressure washer can be used
-----------	---

GroundTrak[®] PRO

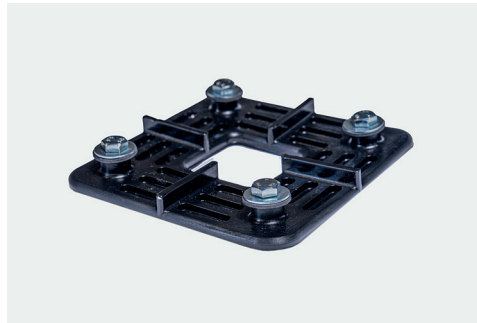
GroundTrak PRO Connectors

Standard

A durable plate with pre-set bolt holes suitable for 2-way or 4-way connection. Simply align the mats over the connector and secure from the top using bolts and washers. This is our most versatile and user-friendly option, allowing for fast, straightforward installation while providing a strong, reliable connection.



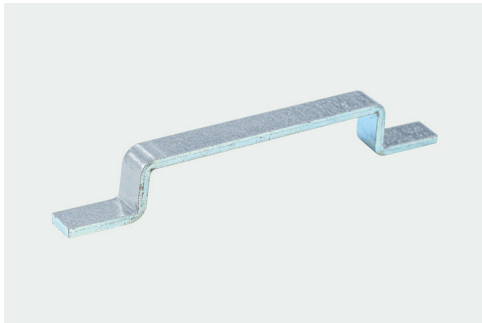
2-way Standard Connector



4-way Standard Connector

Galvanised Steel

A heavy-duty, corrosion-resistant connector available in both 2-prong and 4-prong configurations. The prongs insert through the pre-drilled holes, locking the mats together without the need for bolts or washers. This provides a quick and tool-free method of joining mats.



2-way Galvanised Connector



4-way Galvanised Connector