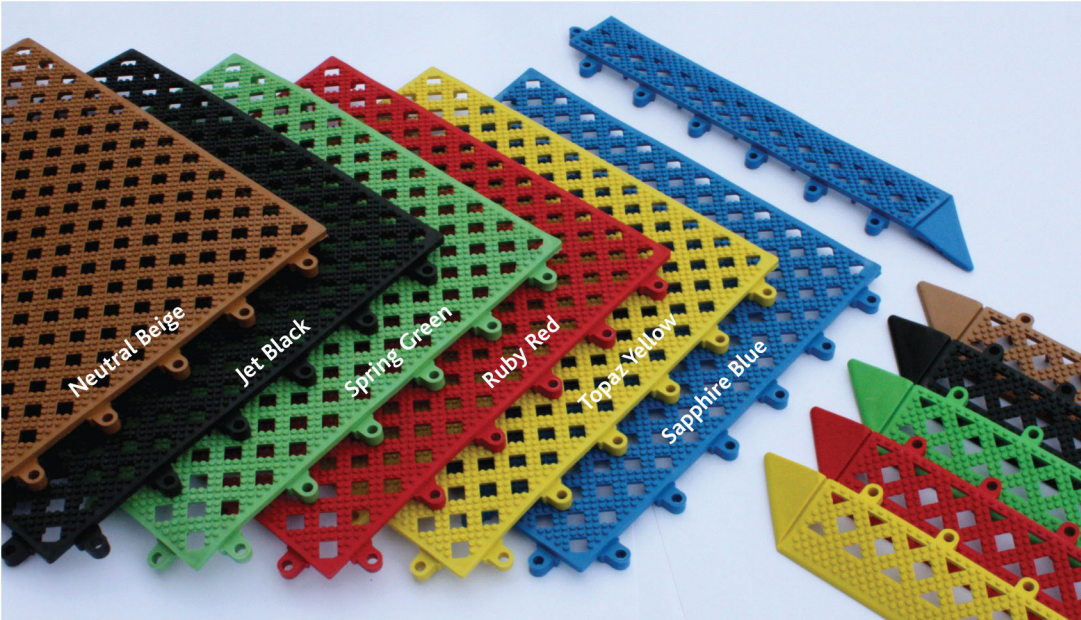
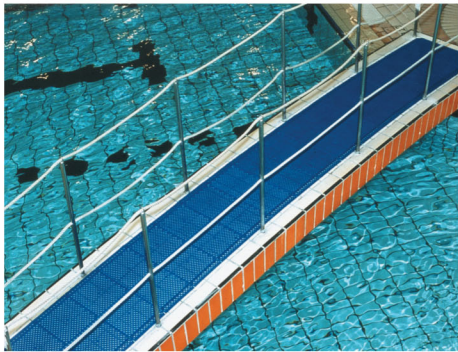




Kumfi Tile PVC

- Versatile interlocking duckboard tile system with high grip surface suitable for indoor and outdoor dry or wet areas.
- Soft PVC construction provides barefoot comfort and safety for swimming pools, showers, changing rooms and numerous other leisure applications.
- Free-draining surface keeps feet clear of standing water.
- Bevelled edge system provides easy wheeled access.
- Overall height 12mm.

Code	Description	Metric	Imperial
KT1212	Tile	30cm x 30cm	12" x 12"
KT1202	Bevel Edge	30cm x 5cm	12" x 2"



- Simple and effective interlocking system ensures a firm, quick joint which can be easily, but not accidentally released.
- Bevelled edge component moulded with corner section which can be simply removed with a sharp knife when not required.
- Can be laid to fit awkward shapes in any colour combination.
- System allows rapid extension or adaption of duckboard areas and individual damaged tiles can be easily replaced.