

NEW

PRO-Matic

Configurable Trolley Range

Fully **Customisable**
Safe and **Secure** Storage
Discreet Waste Facility
Built to Last

“ Increase cleaning
productivity with
configurable design.”



ReFlo
TECHNOLOGY



Numatic
INTERNATIONAL

PRO-Matic

Raising Cleaning Standards and Productivity

- ✓ Increase cleaning productivity with configurable design
- ✓ Structofoam and Stainless Steel construction
- ✓ Environmentally sustainable ReFlo Technology, using the highest quality recycled plastic
- ✓ Industry colour-coding for effective infection control
- ✓ Lockable and closed-away systems for public cleaning



“Great security with lockable doors to hide away chemicals.”

Hospitality



Healthcare



Education



Retail



www.numatic.co.uk



+44 (0)1460 68480

PRO-Matic

Product Features

PRO-Matic is the ultimate cleaning system, offering a choice of 9 base units and a wide range of kits, accessories and features for limitless configurations.



Safe and Secure Storage

Lockable and closed-away systems for safe and secure cleaning in public areas.



Discreet Waste Facility

Innovative waste facility folds away for compact, convenient and unobtrusive storage.



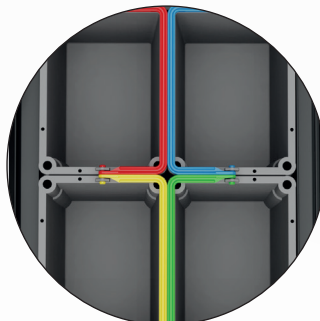
Built to Last

Chemical-resistant, heavy-duty, long-lasting Structofoam and Stainless Steel construction.



Customisable Door Panels

Add the finishing touch with personalisation, including branding or graphics, for a professional, "front of house" image.



Industry Colour-coding

Easily identify which equipment to use in which areas with industry colour-coding for effective infection control and increased productivity.



Drawer Storage

Convenient drawer storage for access to all your cleaning equipment and supplies on the move.

The ultimate configurable
cleaning system



* Stated figure represents maximum use of recycled plastic in ReFlo Janitorial range, not including kits and accessories.



Following extensive research and testing, we have introduced ReFlo Technology.

ReFlo Technology uses the highest quality recycled plastic within our manufacturing processes, delivering the same Numatic reliability, durability and quality as always.

Providing a tough Structofoam construction, ReFlo Technology ensures our products are both sustainably engineered and built to last.



www.numatic.co.uk



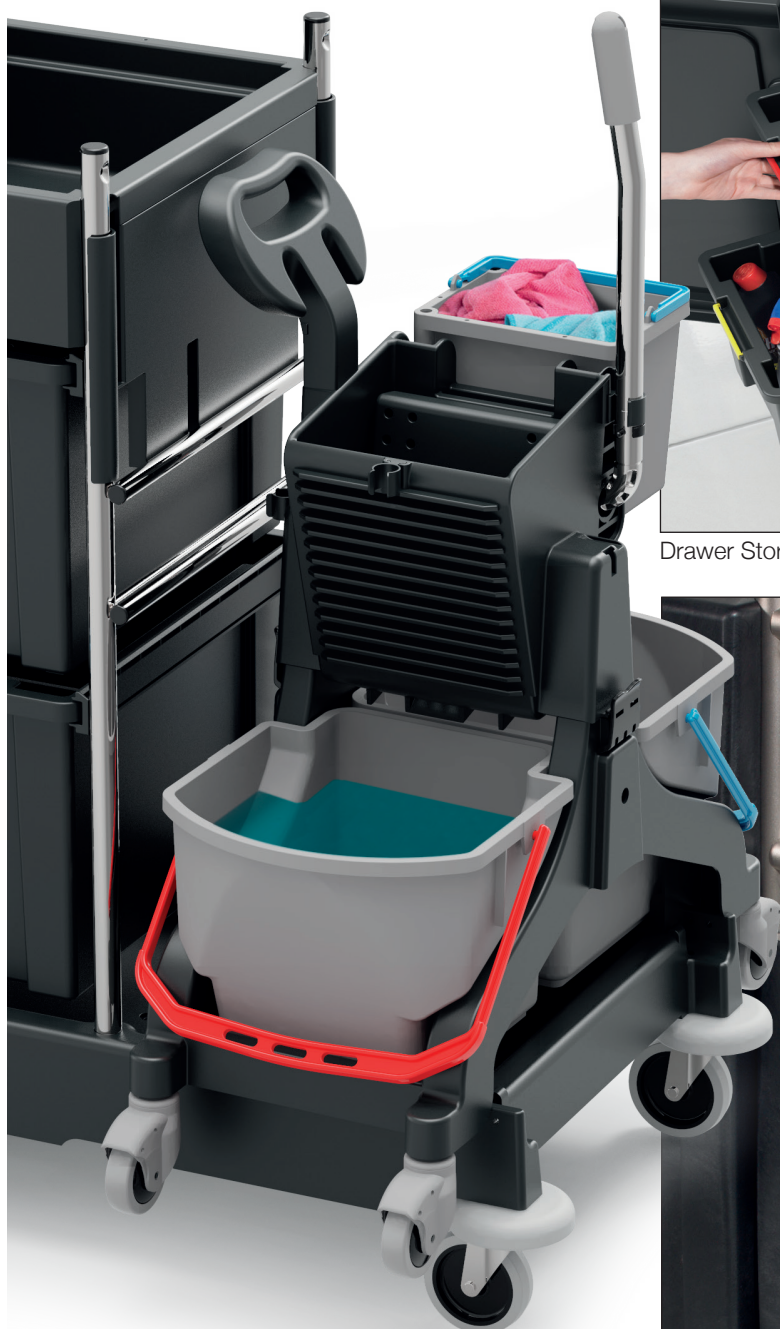
+44 (0)1460 68480

PRO-Matic

Unlimited Configurations

PRO-Matic offers complete versatility with on-board storage options for waste, mop kits, equipment and supplies.

Whether the need is for open or enclosed, lockable or easy-access, PRO-Matic offers a storage solution to meet the precise requirements of any user, in any environment, for any application.



MidMop Mopping Option



Drawer Storage Options



Lockable Hood Storage Option



Discreet Waste Storage System

“ Love the foldaway bin as it looks neat and tidy in public areas. ”



Nu-Design

Bespoke Janitorial

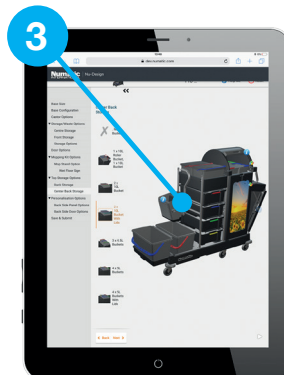


Nu-Design guides you through the product configuration process, providing a visual output and configuration breakdown at each selection. The result; a reliable, functional and innovative cleaning system that fits your needs precisely.

How it works

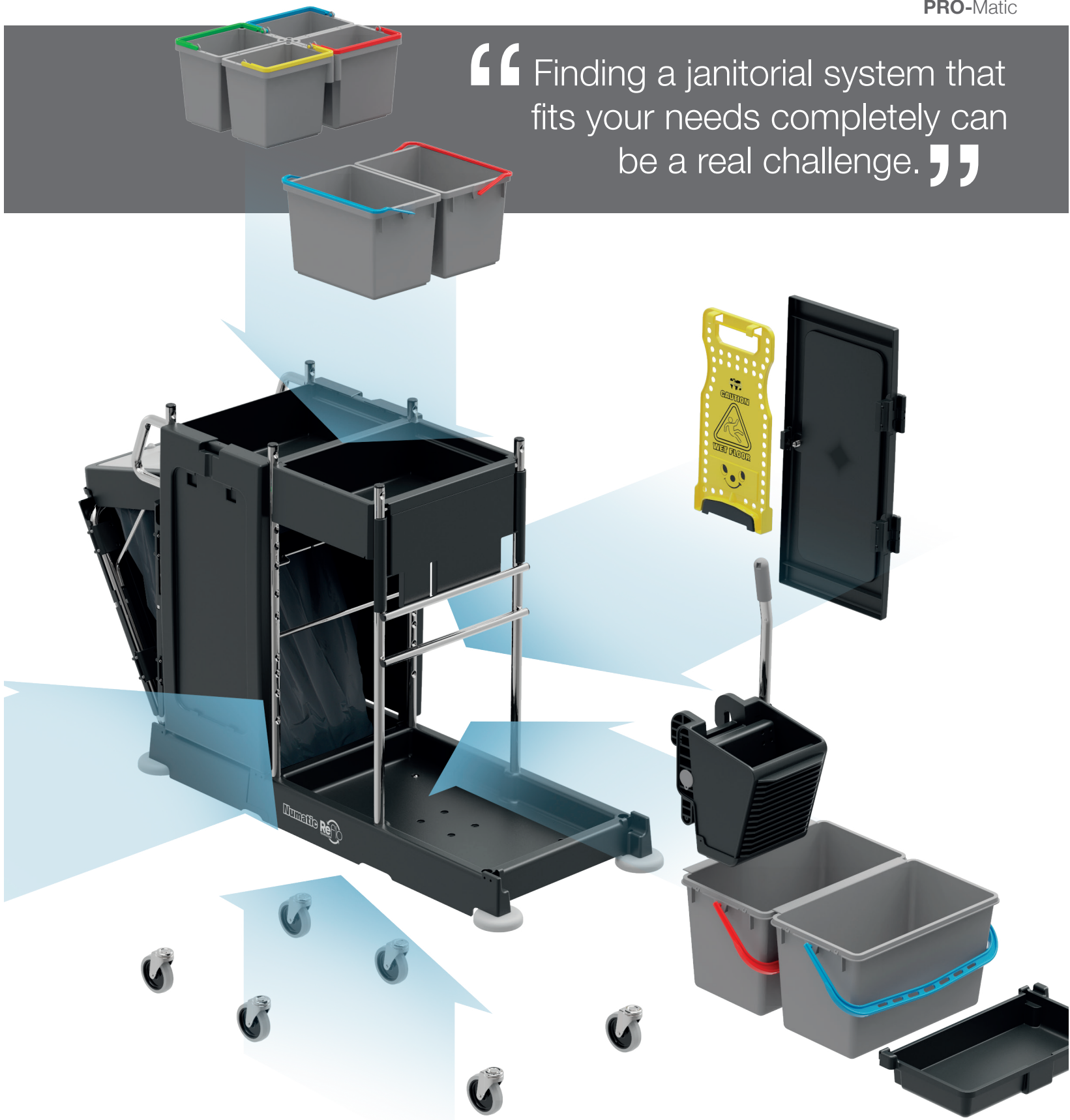
1. Select your trolley base and castor options
2. Pick storage options that meet your needs exactly
3. Choose your mopping system, waste options, accessories and personalisation
4. Submit for an itemised breakdown and quote

Compatible with desktop and mobile devices



Visit: www.numatic.com/apps/nu-design

“ Finding a janitorial system that fits your needs completely can be a real challenge. ”



Poor selection and configuration lowers cleaning standards and productivity.



www.numatic.co.uk



+44 (0)1460 68480

Small PM10S/11S/12S

The ultimate compact cleaning system.

- Convenient and unobtrusive in use
- 100% configurable cleaning system
- Discreet foldaway waste facility
- Tough Structofoam and Stainless Steel construction
- Environmentally sustainable ReFlo Technology



PM10S

- Waste 120L / 2 x 70L
- Optional Castor sizes: 100 / 125 / 200mm & Braked
- Multiple Kit Options
- 580x972x1073mm (WxLxH)

Medium PM20S/21S/22S

Complete versatility and convenience of storage.

- Mid-size specification
- 100% configurable cleaning system
- Discreet foldaway waste facility
- Tough Structofoam and Stainless Steel construction
- Environmentally sustainable ReFlo Technology



PM20S

- Waste 120L / 2 x 70L
- Optional Castor sizes: 100 / 125 / 200mm & Braked
- Multiple Kit Options
- Optional Doors
- Optional Storage Drawers
- 580x1335x1073mm (WxLxH)

Large PM30S/31S/32S

Access to your entire storeroom on the move.

- Maximum storage options
- 100% configurable cleaning system
- Discreet foldaway waste facility
- Tough Structofoam and Stainless Steel construction
- Environmentally sustainable ReFlo Technology



PM30S

- Waste 120L / 2 x 70L
- Optional Castor sizes: 100 / 125 / 200mm & Braked
- Multiple Kit Options
- Optional Doors
- Optional Storage Drawers
- 580x1700x1073mm (WxLxH)



PM11S

- Waste 120L / 2 x 70L
- Optional Castor sizes: 100 / 125 / 200mm & Braked
- Optional Doors
- Optional Storage Drawers
- 580x972x1073mm (WxLxH)



PM12S

- Waste 2 x 120L / 4 x 70L
- Optional Castor sizes: 100 / 125 / 200mm & Braked
- 580x972x1073mm (WxLxH)



PM21S

- Waste 120L / 2 x 70L
- Optional Castor sizes: 100 / 125 / 200mm & Braked
- Optional Doors
- Optional Storage Drawers
- 580x1335x1073mm (WxLxH)



PM22S

- Waste 2 x 120L / 4 x 70L
- Optional Castor sizes: 100 / 125 / 200mm & Braked
- Optional Doors
- Optional Storage Drawers
- 580x1335x1073mm (WxLxH)



PM31S

- Waste 120L / 2 x 70L
- Optional Castor sizes: 100 / 125 / 200mm & Braked
- Optional Doors
- Optional Storage Drawers
- 580x1700x1073mm (WxLxH)



PM32S

- Waste 2 x 120L / 4 x 70L
- Optional Castor sizes: 100 / 125 / 200mm & Braked
- Optional Doors
- Optional Storage Drawers
- 580x1700x1073mm (WxLxH)



PRO-Matic Options

Choose your castors, storage options, on-board security and personalisation.

100mm Castors



204062 1 x 100mm Grey, Castor



204074 1 x 100mm Grey, Braked Castor

125mm Castors



204113 1 x 125mm Grey, Castor



204114 1 x 125mm Grey, Braked Castor

200mm Castors



901814 1 x 200mm Grey, Castor



906377 1 x 200mm Grey, Braked Castor

Castors Fixings



909693 100mm Castor Fixing Bracket Kit



909433 125mm Castor Fixing Bracket Kit



909435 200mm Castor Fixing Bracket Kit

Buckets



4.5L Bucket

With Lid		Without Lid	
906269	Red Handle	905248	Red Handle
906270	Blue Handle	905249	Blue Handle
906271	Green Handle	905250	Green Handle
906272	Yellow Handle	905251	Yellow Handle



5L Swing Bucket

With Lid		Without Lid	
906273	Red Handle	905225	Red Handle
906274	Blue Handle	905226	Blue Handle
906275	Green Handle	905227	Green Handle
906276	Yellow Handle	905228	Yellow Handle



10L Bucket

With Lid		Without Lid	
906289	Red Handle	905237	Red Handle
906290	Blue Handle	905238	Blue Handle
906291	Green Handle	905239	Green Handle
906292	Yellow Handle	905240	Yellow Handle



10L Roller Bucket

907285	Red Handle
905827	Blue Handle



17L Bucket

905229	Red Handle
905230	Blue Handle
905231	Green Handle
905232	Yellow Handle



22L Wide Bucket

905241	Red Handle
905242	Blue Handle
906305	Green Handle
906306	Yellow Handle

Storage and Security



Shallow Storage Box and Deep Storage Box

- A 910305 Shallow Storage Box, No Lids, ReFlo Black
 B 910301 Deep Storage Box, No Lids, ReFlo Black, C/W Divider
 C 910303 Deep Storage Box Divider, ReFlo Black
 D 900546 Storage Box Twin Lid Set (No Locks), ReFlo Black
 E 910964 Storage Box Runner Moulding Kit, Grey C/W Fixings

KIT SRK62S

- 910316 C/W Stainless Steel Accessory Bar and Lock, ReFlo Black, Grey Door



2-Piece Key Locking Kit

- 900583 2-Piece Deep Storage Box Key Locking Kit

Clip-on Colour Strips

- for Shallow & Deep Storage Box (per 10)
 906332 Red 906334 Green
 906333 Blue 906335 Yellow



Colour Indicator Discs

- for 120L Big Lid, (Per 10)
 627596 Red 627598 Green
 627913 Blue 627599 Yellow



PRO-Matic Splitter Kit

- 910888 ReFlo Black, for 2 x 70L Bags C/W Bags

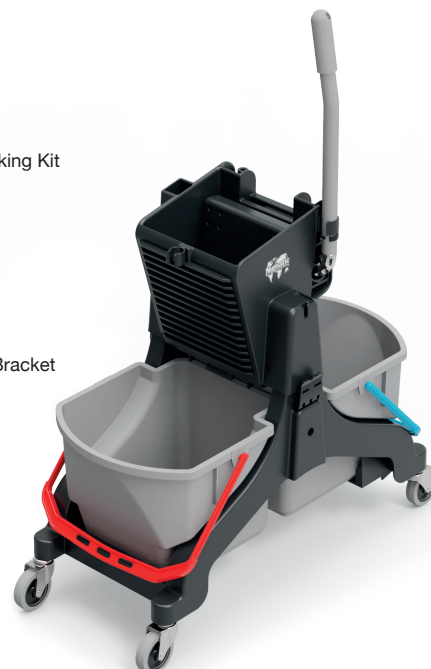


Kit SRK23

- 911190 Flexible Clamp Accessory Bar

Mop Clamp

- 904117 Single Tool Bracket



MidMop Option MMB1616

- Vertical Press available with / without foam insert
- Optional Mop Stand
- Optional Push Handle
- 510x680x1020mm (WxLxH)
- Used on: PM10S / PM20S / PM30S

Mop Support Moulding

- 910317 Mop Support Moulding, ReFlo Black



Wet Floor Signs

- A 629044 Wet Floor Sign C/W Tray-Fix Hooks, Yellow
 B 901457 Wet Floor Sign Assembly, Yellow, English
 900747 Wet Floor Sign Assembly, Yellow, English
 x 28 Boxed



DOOR KIT SRK26

- 908171 2 x Doors
 C/W Locks and Hinges



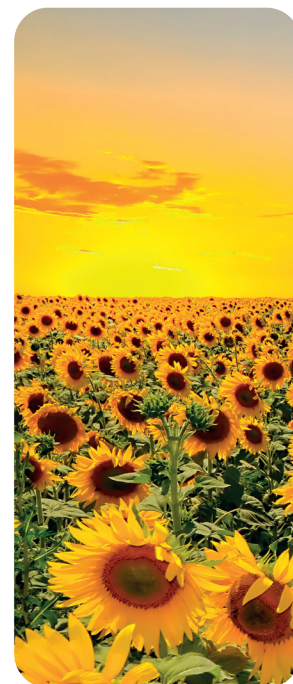
KIT SRK27

- 908172 Door Graphic Set
 No.1 Happy Cleaning



KIT SRK28

- 908173 Door Graphic Set
 No.2 Big Ben



KIT SRK29

- 908174 Door Graphic Set
 No.3 Sunflowers



www.numatic.co.uk



+44 (0)1460 68480

PRO-Matic

Mop Kit Options

Whatever the task in hand, equip your cleaning system with a mop kit for the job. Tough Stainless Steel features and industry colour-coding ensure a solution that meets your needs precisely.

SRK1S Vertical Press

CAPACITY CLEAN (L)	17
CAPACITY DIRTY (L)	17
PRESS	Vertical
OPTIONAL MOP KITS	DTK1 / 2 / 3 / 11G / 12G / 13G
USED ON	PM10S / 20S / 30S

- ✓ Vertical Press with Stainless Steel Handle
- ✓ 2 x 17L Capacity
- ✓ Colour-coded
- ✓ Kentucky Mops
- ✓ Flat Mops



SRK2S Vertical Press

CAPACITY CLEAN (L)	22
CAPACITY DIRTY (L)	22
PRESS	Vertical
OPTIONAL MOP KITS	DTK1 / 2 / 3 / 11G / 12G / 13G
USED ON	PM10S / 20S / 30S

- ✓ Vertical Press with Stainless Steel Handle
- ✓ 2 x 22L Capacity
- ✓ Colour-coded
- ✓ Kentucky Mops
- ✓ Flat Mops



SRK3S Wide Press

CAPACITY CLEAN (L)	22
CAPACITY DIRTY (L)	22
PRESS	Wide
OPTIONAL MOP KITS	DTK2 / 4
USED ON	PM10S / 20S / 30S

- ✓ Speedclean Wide Press with Stainless Steel Handle
- ✓ 2 x 22L Capacity
- ✓ Colour-coded
- ✓ Flat Mops



SRK4 MopMatic

CLEAN MOPS	12
DIRTY MOPS	20-25
OPTIONAL MOP KITS	DTK2 / 12G
USED ON	PM10S / 20S / 30S

- ✓ MopMatic
- ✓ 12 Pre-dosed Mops
- ✓ Colour-coded
- ✓ Infection Control
- ✓ Hands-free



SRK5 MopMatic

CLEAN MOPS	24
OPTIONAL MOP KITS	DTK2 / 12G
USED ON	PM10S / 20S / 30S

- ✓ MopMatic
- ✓ 24 Pre-dosed Mops
- ✓ Colour-coded
- ✓ Infection Control
- ✓ Hands-free



SRK6S MopMatic

CLEAN MOPS	24
DIRTY MOPS	20-25
OPTIONAL MOP KITS	DTK2 / 12G
USED ON	PM10S / 20S / 30S

- ✓ MopMatic with Stainless Steel Hang-on Frame
- ✓ 24 Pre-dosed Mops
- ✓ Colour-coded
- ✓ Infection Control
- ✓ Hands-free



PRO-Matic Mop Kits

**KIT SRK1S**

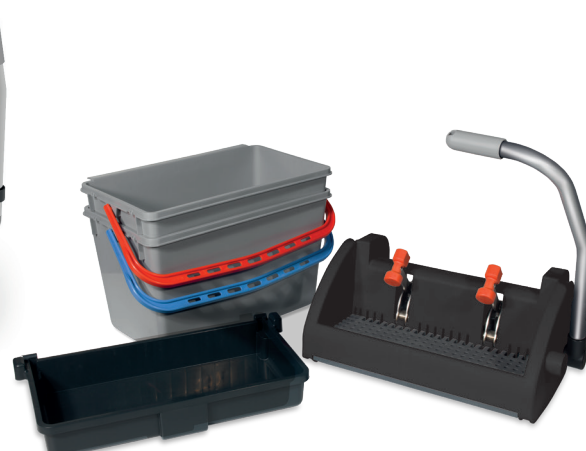
909523

- Vertical Press with Stainless Steel Handle available with / without foam insert
- 1 x 17L Red Handle Bucket, Grey
- 1 x 17L Blue Handle Bucket, Grey
- 1 x 17L Bucket Support Tray
- Used on: PM10S / 20S / 30S

**KIT SRK2S**

909524

- Vertical Press with Stainless Steel Handle available with / without foam insert
- 1 x 22L Red Handle Bucket, Grey
- 1 x 22L Blue Handle Bucket, Grey
- 1 x Front Bucket Tray
- Used on: PM10S / 20S / 30S

**KIT SRK3S**

909525

- Speedclean Wide Press with Stainless Steel Handle
- 1 x 22L Red Handle Bucket, Grey
- 1 x 22L Blue Handle Bucket, Grey
- 1 x Front Bucket Tray
- Used on: PM10S / 20S / 30S

**KIT SRK4**

910433

- 1 x MopMatic 2 Bucket, Grey
- C/W Set of Colour-coded Discs
- 1 x 22L Red Handle Bucket, Grey
- 1 x Front Bucket Tray
- Used on: PM10S / 20S / 30S

**KIT SRK5**

910435

- 2 x MopMatic 2 Bucket, Grey
- C/W Set of Colour-coded Discs
- 1 x Front Bucket Tray
- Used on: PM10S / 20S / 30S

**KIT SRK6S**

909526

- 2 x MopMatic 2 Bucket
- C/W Set of Colour-coded Discs
- 1 x 22L Red Handle Bucket, Grey, C/W lid
- MopMatic 2 Hang-on Frame, Stainless Steel
- 1 x Front Bucket Tray
- Used on: PM10S / 20S / 30S

Optional Mop Sets

**DTK1 Kentucky Mop**

629332

**DTK2 Pocket Mop**

629333

**DTK3 Hang-on Mop**

629334

**DTK4 Velcro Mop**

629335

**DTK12G Pump Action Mop**

906205

**DTK13G Pump Action Hang-on Mop**

909278



www.numatic.co.uk



+44 (0)1460 68480